

20

YEARS OF
GIVING



Because we love our community...

The Columbia Valley Community Foundation (CVCF) exists to support this amazing, incredible, inspiring place we all know and love. Our mission is to cultivate a thriving community by connecting people, ideas and initiatives with inspired giving. This year, we are especially thrilled to present our 2021 annual report as we conclude a milestone 20th year!

In 2001, in the midst of a changing world, a group of like-minded friends and colleagues from across the Columbia Valley decided to launch the CVCF with the goal of creating something that would be self-sufficient in supporting our local communities. Founding board of directors chair Bruce McLaughlin says he hopes to see the CVCF continue to grow the endowments and support our communities in meaningful ways moving forward.

We would like to thank these founding members (many of whom are pictured on the next page), who turned an inspirational idea into a thriving organization. Since that first board, we have seen countless volunteers, donors, businesses, community groups and more come together to share in that vision and help support the CVCF. We are grateful for your contributions.

The CVCF has granted over \$930,000 supporting over 300 projects and initiatives and awarded \$454,000 in scholarships and bursaries to local students.

As chair, I look forward to where we will be in the next 20 years, and I celebrate this anniversary with gratitude and excitement alongside my fellow board members and Executive Director Thiloma Hofer.

I would like to thank our past Executive Director Caitlin Hall-Sharp, who steered us through the challenges of the COVID-19 pandemic with grace and gumption, and past chair Kyla Lam. Thank you for your service to our community.

The CVCF is your community foundation, dedicated to supporting the Columbia Valley we all call home. As you read our annual report, we hope you can see the vision we hold dear: that a caring and dedicated group of residents can come together to make our valley a strong and vibrant place to live, work and play.



Wendy Booth | Thiloma Hofer
Chair | Executive Director

message from the
**CHAIR &
EXECUTIVE
DIRECTOR**

Yours in Giving, **WENDY BOOTH**
Chair, CVCF

THILOMA HOFER
Executive Director, CVCF

ABOUT THE CVCF

The Columbia Valley Community Foundation is a registered charitable organization that focuses on the connection between donors and community needs with the vision of enriching lives in the Columbia Valley.

Made possible by the generosity of our donors, we support projects, initiatives, and organizations in the Columbia Valley through grant funding. These financial resources benefit a broad spectrum of community needs ranging from literacy to environmental to youth opportunities and beyond. Since the CVCF's formation in 2001, endowed assets have grown from the \$141,014 in its' first year, to over \$3.7M now. In this time, the CVCF has granted over \$930,000 supporting over 300 projects and initiatives.

In addition to community granting, the CVCF distributes financial support to Columbia Valley students pursuing post-secondary education. Since the donation of the first scholarship fund in 2006, over \$454,000 has been granted to over 220 local students pursuing higher education.

The land on which we operate is on the shared and unceded traditional territory of the Ktunaxa and Shuswap peoples and the home of the Metis Nation of BC. We are grateful to work, play, & live on these lands.

Original Board Members



Bruce McLaughlin



Emile Morin



Leona Gadsby



Hedi Trescher



Seona Helmer

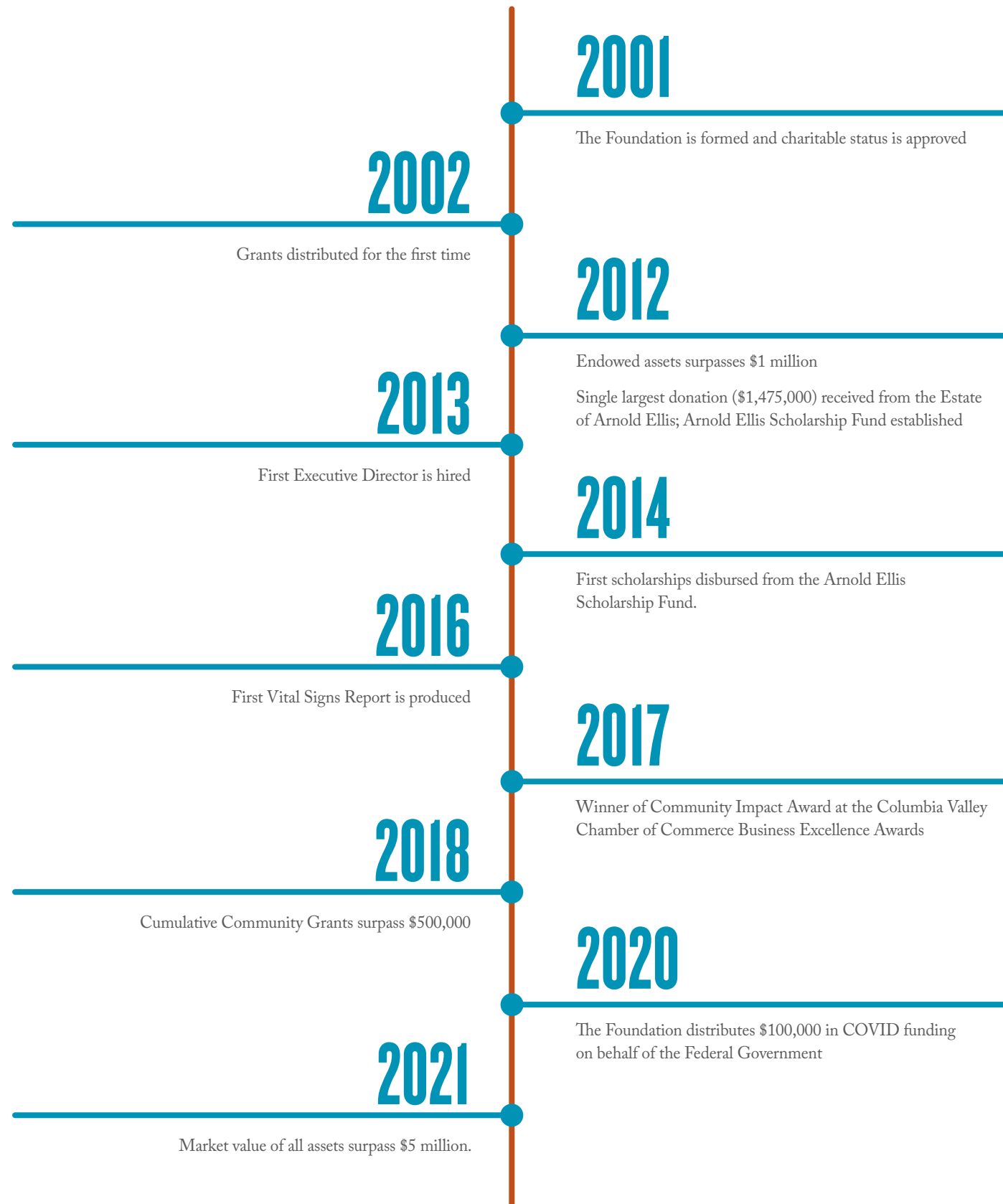


Tim Strand

Not pictured: Ken Bell, Marla Lucas, Roger Smith and Lynne Turvey



KEY MILESTONES



2021-23 STRATEGIC PLAN

VISION A VIBRANT COLUMBIA VALLEY

MISSION TO CULTIVATE A THRIVING COMMUNITY BY CONNECTING PEOPLE, IDEAS, AND INITIATIVES WITH INSPIRED GIVING.

VALUES

INCLUSIVE

Our work is characterized by mutual respect and the spirit of inquiry. We support equal opportunity for individuals and organizations.

INTEGRAL

We uphold our vision, mission, and guiding principles – we do what we say we are going to do.

ACCOUNTABLE

We are responsible for what we do and transparent in how we do it.

COLLABORATIVE

We value the power of individuals and organizations working together for positive change.

INNOVATIVE

We are proactive, adaptive, and nimble in meeting the emerging needs of our community.

STRATEGIC AREAS OF FOCUS

Staffing Requirements ←

The CVCF will ensure we have adequate staffing to manage day to day operations and deliver our strategic initiatives and actions.

Outreach Plan and Profile Expansion ←

The CVCF will become more visible in the community by raising our profile and expanding our engagement.

→ **Inter-organizational Relationships**

The CVCF will collaborate with other organizations to identify needs and meet mutual goals that benefit the Columbia Valley. We will work to boost community trust by intentionally building relationships.

→ **Internal Structure**

The CVCF will invest time and resources into reviewing and revising our governance processes and building internal knowledge and capacity.

DONOR SPOTLIGHT

Jim Ashworth

What will your legacy be? For Jim Ashworth, it's a question he often thinks about. Of course, at 103 years old, this is not an unusual question to ask.

Jim might have been born in Cranbrook, but his hometown is undoubtedly right here in Invermere. He grew up here, ultimately settling locally after a long career with the Royal Canadian Air Force.

Jim flew in the Second World War as part of the Allied efforts in the Burma Campaign. For his involvement, Jim received a Burma Star. In 2020, he heard about two other Burma Star recipients doing fundraiser walks in their own communities (one in England, one in Victoria), and decided to follow suit.

So, at the age of 101, Jim walked an incredible 101 blocks, raising thousands of dollars. That money was put into an open CVCF fund, with income from the fund used to support the needs of the Columbia Valley Food bank.

"I just felt that, at my age, it might be nice to know that I've done something," Jim reflects. "I wanted the satisfaction of knowing I did donate something— not a lot of money these days, but that I did something."

Jim's contribution didn't stop with the food bank fundraiser. There's plans to give more. Thanks to the CVCF support for this fund, Jim's contributions will help to grow a legacy of giving in this community that will continue on for many years to come.



EVERY CHILD MATTERS



One day each year, we pause to remember the traumatic history of Canada's Indigenous people. Orange Shirt Day on September 30th is a day focused on truth and reconciliation.

But the team at Columbia Basin Environmental Education Network (CBEEN), whose home base is right here in Invermere, wanted to take the concept further and expand this important learning through the rest of the year.

"The Every Child Matters Challenge is a weekly challenge to learn about Indigenous topics such as Truth and Reconciliation," shares coordinator Jenna Jasek. "People needed a platform to learn more about Indigenous topics and perspectives, and there wasn't anything out there. So, we thought we would create this year-long challenge."

The Every Child Matters Challenge offered groups the opportunity to take part in a full year of learning, portioned into bite-sized pieces that will only take 20-30 minutes of time each week. Topics have included learning about the United Nation Declaration on the Rights of Indigenous Peoples, reconciliation, cultural appropriation, study of the Truth and Reconciliation Committee's 52 Calls to Action, and more.

The Columbia Valley Community Foundation's donation allowed CBEEN to support access by the participating organizations to Indigenous learning resources to help deepen their understanding. The funding also helped to compensate Indigenous speakers at virtual gatherings to thank them for sharing their time and knowledge with this learning community.

The response to the challenge has been phenomenal: Primary to post-secondary schools, nonprofits, and assorted businesses — more than 100 organizations representing over 1,500 staff and volunteers — signed up for the pilot challenge.

After such a successful pilot year, CBEEN intends to continue this campaign into a second year, with a more in-depth view of Truth and Reconciliation. To learn more, visit: <https://cbeen.ca/every-child-matters/>

#BRETTBRETTBALTAC BOATCONCERT

Spotlights pierced the summer evening sky as boats spread across the water like confetti. Standup paddleboards and brightly-coloured plastic kayaks floated serenely in patches, while dotted throughout the gaps were innertubes and pool noodles, swimmers and sunbathers, all taking in the most magical concert imaginable on Lake Windermere.

For the second time in as many years, famed entrepreneur W. Brett Wilson and country music star Brett Kissel, fellow friends and philanthropists, teamed up for a free concert that attracted thousands and raised valuable funds for the Columbia Valley Community Foundation.

"We really wanted to do something that was in support of those most challenged by COVID," says Wilson. "The Columbia Valley Community Foundation is a centrepiece. Rather than choosing one cause, we could give it to the foundation, which then finds the best and highest impact uses for it. It was really that simple."

The #BrettBrettBaltacBoatConcert supports the CVCF's Community Fund, which provides flexible funding to urgent and relevant needs in the community including local food security, help for vulnerable populations, mental health programs as well as health and safety measures.

Over 3,000 concert-goers showed up in 2020; jumping to

more than 4,000 last year. In total, these concerts have raised \$150,456 for our community.

For Wilson, the event itself was a lot of fun, with matching Canadian-themed shirts for the whole crew and a night of celebration during a difficult season for many. Wilson says while it was marketed as a boat concert, it became so much more.

"It became an innertube concert; it became a pool noodle concert. There were people on paddleboards, people in canoes. There were people on little rafts and, literally, hundreds and hundreds of people wrapped around the boathouse and dock," says Wilson.

Boats further out and surrounding households tuned into the FM channel to catch Kissel's country concert.

"It was kind of amusing — we even had people across the lake flashing their car lights at us, listening to the concert on the FM channel," recalls Wilson.

Concert-goers have told Wilson often how much fun the evening was listening to the country crooning of Brett Kissel while gently rocking in the warm waters of Lake Windermere, and leaving as the sun set, hearts full thanks to the generous spirit of giving that filled the summer-lit skies over the Columbia Valley.



Brett Kissel entertaining the floating audience.

“Loretta Girardiz once said: ‘if someone listens, or stretches out a hand, or whispers a kind word of encouragement, or attempts to understand a grieving person, extraordinary things begin to happen.’”

The funding received from CVCF allows the Hospice Society of the Columbia Valley to train visitor volunteers and equip them with the skills necessary to support all those that are grieving or are caring for a loved one with a terminal illness. The funding permits us to offer one-on-one assistance and bereavement support groups free of charge to clients. We would not be able to have continuous programs and services were it not for this funding.”

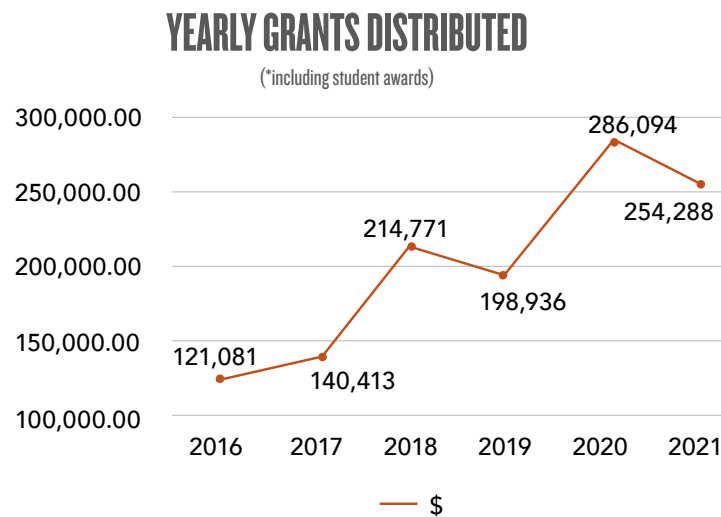
– Michele Nieder, Executive Director, Hospice Society of the Columbia Valley



- Arts & Culture
- Safety/Security
- Environmental
- Vulnerable Pop.
- Mental Health
- Youth
- Community/Belonging

COMMUNITY IMPACT

In 2021, the CVCF administered four granting cycles including COVID-19 Community Response Fund grants, our annual Community Granting, Student Awards and Kindness Microgrants.



FORTY THREE COMMUNITY GRANTS

27 GRANT RECIPIENT ORGANIZATIONS

\$184,488
IN COMMUNITY GRANTS

COMMUNITY GRANT STORIES

Summit Trail Makers Society

The Summit Trail Makers Society (STMS) maintains 11 stunning hiking trails in the Columbia Valley. STMS has a lot of heart, but not a lot of cash, to undertake the monumental task of upkeep and maintenance on these well-loved local trails, such as Lake of the Hanging Glacier, Pedley Pass and Welsh Lakes.

The society doesn't have the finances or labour needed to deal with costly issues, such as road washouts or major trail repairs. While they know that the last few years have seen double to triple the number of hikers on STMS trails, until recently there was no solid information about just how many feet hit a local trail each season.

With funding from the Columbia Valley Community Foundation, alongside Recreation Sites and Trails BC, STMS was able to install 11 sign-in boxes. Each box contains a logbook where hikers supply information, including date, hometown, number in the group, if they are STMS members, and a comment. While logbooks aren't 100% accurate, it gives a much better idea of hard numbers than STMS had previously.

“Maintaining recreation opportunities for those living in the East Kootenay, and for tourists that support our local economy, is extremely important, and numbers speak loudly when trying to secure funding,” says STMS member Joe Lucas, the driving force behind this project. “People come to the Invermere area to recreate, and hiking is a major draw, so when you can provide the numbers of users that goes a long way when advocating for road repair or trail improvements.”

Joe had tried for years to get this project off the ground. CVCF's funding helped to make that dream a reality.



Columbia Basin Alliance for Literacy Storywalk

Family fun, a walk, a story and time spent outdoors — StoryWalks are the perfect combination of all these things. Story walks let you read and engage in fun activities as you walk through the pages of a book.

The Columbia Basin Alliance for Literacy (CBAL) wanted to bring storywalks to the Columbia Valley, and was able to do so in 2021 thanks to funding from the Columbia Valley Community Foundation.

A StoryWalk is a series of signs featuring sequential spreads from a children's picture book. The signs are spread throughout indoor or outdoor spaces in all seasons, allowing a person to read the book as they stroll.

Sandy Kalesnikoff, CBAL's community literacy outreach coordinator, says the 2020 Community Literacy Plan identified getting people outside and moving as one of their goals, so when she heard about the concept of a storywalk at a literacy meeting in 2020, the organization began working towards creating some local StoryWalk opportunities.

The pandemic slowed down the implementation of the project somewhat, but ultimately CBAL was able to see the project from idea to reality by 2021. The reaction was positive to the three initial stories, “Parents, caregivers, teachers and children of all ages have enjoyed participating in the storywalk,” shares Sandy.

The project has really taken off. The Columbia Basin Alliance for Literacy and members of the Community Literacy Planning Committee are pleased to have three more stories ready now, with permanent StoryWalks will be installed at the Radium Public Library, the Invermere Public Library, and in Canal Flats.

“The stories will be changed up every month or so, and our plan is to increase the amount of StoryWalk stories so there are new ones in each community every year,” shares Sandy.

MOBILE YOUTH CENTRE

With the Summit Youth Centre Hub logo splashed on the side, the big white trailer would alert the local teens to the start of another fun evening. Youth would begin ripping down the road on their bikes towards Frank's Arena in Edgewater, or the Lions Park in Canal Flats throughout the summer.

The park would fill with the sounds of teens doing tricks off the skate ramps, chowing down on hot dogs, or chattering with friends and youth workers on hand to facilitate. This is the scene of the Summit Youth Centre Hub's pilot season for the mobile youth hub. And, by all accounts, it was a wild success.

The Summit Youth Centre Hub in Invermere is an amazing venue for local youth. With games, activities, specialized programs and staff on hand, local teens have a safe space to hang out, make friends, and take part in some fun activities.

While Summit is the central hub for teens in Invermere, youth in outlying communities can face barriers in accessing the activities and services in the Invermere centre. Through the CVCF Youth Community Summit in 2020, local youth identified transportation as one of the key issues

they are facing, alongside mental health resources, housing, and access to free or affordable recreation.

The youth centre team heard these young adults' concerns and formed a plan, one the Columbia Valley Community Foundation was only too happy to help support.

"Instead of bringing kids here, we thought 'let's go to them'," shares Alison Bortolon, centre manager. "Twice a week throughout the summer, we'd pack up the youth hub and take it to them!"

Through this initiative, explains Alison, "We were able to address what the youth identified as major issues: transportation, free affordable recreation, and to be honest this helps mental health as well."

The team set up the Mobile Youth Centre in Edgewater every Tuesday and Canal Flats every Thursday. A new trailer, funded through the CVCF as well as the Panorama Foundation, would be filled chock-a-block with skate ramps, boards, knee pads and helmets; outdoor games like spike ball and volleyball; a barbecue and food to feed a pack of hungry teens, and even snack bags to send home.

The program was overwhelmingly received in both communities. Anywhere from 30-40 youth would show up weekly in each community.

"The youth loved it; they were so happy to have us there," says Alison. "It was an awesome summer; it was a cool opportunity, and the kids were absolutely stoked."

While it was fun, the mobile youth centre allowed staff to do more than just entertain area youth. They built relationships with local teens through the time spent in each community.

"Just knowing they can reach out if they have issues or things they want to talk about, we're there. We're a listening ear," says Alison.

Summit Youth Centre Hub plans to run the program again this summer. Stay tuned!

We were able to address what the youth identified as major issues...

KINDNESS MICROGRANTS

In the fall of 2021, the Foundation had a small amount of money left in its COVID relief fund. From a desire to alleviate the strain on the sense of unity induced by the pandemic and create grassroots grant opportunities, the Community Kindness Microgrant pilot project was born. Community members applied for small grants (up to \$500) to develop a short-term kindness project. The positive feedback was overwhelming, and the project was repeated in February 2022.

Art for Seniors

"This project was so fun for many people. We had all kids in our programs help colour cards as well as families throughout the community helping colour. 100 cards and stuffies in gift bags were delivered to Columbia garden village and we've been told it put a lot of smiles on seniors faces" – Angela Miller



Flourishing Kindness

They handed out 150 carnations from 4-6pm. They went into businesses, stopped people on the streets asking, "Would you like a flower" or saying "Happy World Kindness Day". This was also impactful for the youth. Youth learned the impact they can have with a small action. Some youth were even met with tears, and comments such as "I really needed this today" or "This made my whole day!" – Alison Bortolon



Invermere Health Care Workers Appreciation

We received comments like:

"We cannot express how much this has benefitted our workers and our families"

"It's amazing that you have taken this time and expense to pay this much attention to us"

"We deal with difficult situations multiple times a day, and your kindness is welcomed joy that brightens our day"

"On the go with long shifts its hard to get good food.. this basket is awesome. thank you"

– Katie Wells and Yvonne Redeker



Free Spaghetti Feast for Edgewater

It was awesome! The feast was easy to produce and set up. We did a flow through, pick up and delivery of the dinners. Worked really well and think we may do this again in the New Year.

– Roberta Schneider



our
GRANT
recipients

COMMUNITY

LEGACY BUILDING IN 2021

QUALIFIED CHARITY OR DONEE / Project Partner	PROJECT DESCRIPTION	FUND	GRANT \$
VILLAGE OF RADIUM HOT SPRINGS/Columbia Valley Swim Club	ADDITIONAL OPERATIONS STAFF FOR SWIM LESSONS	COVID-19 Community Response Fund, Opportunities for Youth Fund	5,000
HOSPICE SOCIETY OF THE COLUMBIA VALLEY	BEREAVEMENT SUPPORT	Ann Tilley Memorial Fund, Wittke Family Fund, Radium Rotary Mental Health and Wellness Flow Through Fund	2,500
HOSPICE SOCIETY OF THE COLUMBIA VALLEY	BEREAVEMENT SUPPORT	COVID-19 Community Response Fund	5,000
JUNIOR ACHIEVEMENT OF BRITISH COLUMBIA	BRIGHT FUTURE FOR ALL B.C. YOUTH - COLUMBIA VALLEY	Doerr Family Fund	3,500
DISTRICT OF INVERMERE/Windermere Valley Ski Club	COACHING FEES & PROGRAMMING EXPENSES	COVID-19 Community Response Fund	5,000
COLUMBIA LAKE STEWARDSHIP SOCIETY	COLUMBIA LAKE ENVIRONMENTAL EDUCATION AND COMMUNITY ENGAGEMENT	Fairmont Family Fund	2,500
WINDERMERE VALLEY YOUTH CENTRE SOCIETY	COVID SUPPLIES & STAFFING	COVID-19 Community Response Fund	3,360
COLUMBIA VALLEY ARTS COUNCIL	DESIGNATED ENDOWMENT FUND GRANT	Columbia Valley Arts and Culture Fund	768
COLUMBIA BASIN ENVIRONMENTAL EDUCATION NETWORK (CBEEN)	DESIGNATED ENDOWMENT FUND GRANT	Environmental Education Endowment Fund	940
COLUMBIA VALLEY FOOD BANK	DESIGNATED ENDOWMENT FUND GRANT	Columbia Valley Food Bank Fund, Columbia Valley Food Bank- Jim Ashworth Fund	1,081
EDGEWATER RECREATION SOCIETY	DESIGNATED ENDOWMENT FUND GRANT	Schnider Family Legacy Fund	842
HOSPICE SOCIETY OF THE COLUMBIA VALLEY	DESIGNATED ENDOWMENT FUND GRANT	Hospice Society of the Columbia Valley Fund	1,435
FRIENDS OF THE INVERMERE PUBLIC LIBRARY	DESIGNATED ENDOWMENT FUND GRANT	Invermere Public Library Endowment Fund	778
RHS PUBLIC LIBRARY ENDOWMENT FUND	DESIGNATED ENDOWMENT FUND GRANT	Radium Hot Springs Public Library Endowment Fund	1,065
ROCKY MOUNTAIN SCHOOL DISTRICT NO. 6	DTSS STUDENT LUNCH PROGRAM	COVID-19 Community Response Fund	5,000
VARIOUS DONEES	EVERY CHILD MATTERS SHIRTS & FLAGS	Flow-through Funds	1,760
COLUMBIA BASIN ENVIRONMENTAL EDUCATION NETWORK (CBEEN)	EVERY CHILD MATTERS YEAR-LONG LEARNING CHALLENGE	CVCF Community Fund	3,500
WINDERMERE VALLEY YOUTH CENTRE SOCIETY	FLOW-THROUGH DONATION	Flow-Through Funds	24,000
FAMILY DYNAMIX ASSOCIATION	FLOW-THROUGH DONATION	Flow-Through Funds	12,500
ROCKY MOUNTAIN SCHOOL DISTRICT NO. 6	FLOW-THROUGH DONATION	Flow-Through Funds	12,500
VILLAGE OF RADIUM HOT SPRINGS/Radium Rotary Community Garden	GARDEN MAINTENANCE	COVID-19 Community Response Fund	5,000

QUALIFIED CHARITY OR DONEE / Project Partner	PROJECT DESCRIPTION	FUND	GRANT \$
COLUMBIA HOUSE ENHANCEMENT SOCIETY	GENERAL CHARITABLE ACTIVITY	Wittke Family Fund	1,250
VARIOUS DONEES	KINDNESS MICROGRANTS	COVID-19 Community Response Fund	2,500
LAKE WINDERMERE DISTRICT LIONS CLUB	LAKE WINDERMERE DISTRICT LIONS CAMPGROUND	CVCF Community Fund	10,000
LAKE WINDERMERE AMBASSADORS SOCIETY	LAKE WINDERMERE RESTORATION AND EDUCATION	CVCF Community Fund	2,500
COLUMBIA VALLEY ARTS COUNCIL	NATURE IN MUSIC AND ART FESTIVAL	CVCF Community Fund	5,775
DISTRICT OF INVERMERE/Cycling Without Age	OPERATING EXPENSES & BIKE SAFETY MODIFICATIONS	COVID-19 Community Response Fund	5,000
RADIUM HOT SPRINGS PUBLIC LIBRARY	OPERATIONAL & PROGRAMMING EXPENSES	COVID-19 Community Response Fund	4,300
DISTRICT OF INVERMERE/Peaks Gymnastics Society	OPERATIONAL & PROGRAMMING EXPENSES	COVID-19 Community Response Fund	5,000
COLUMBIA VALLEY FOOD BANK	OPERATIONAL & PROGRAMMING EXPENSES	COVID-19 Community Response Fund	5,000
ROCKY MOUNTAIN SCHOOL DISTRICT NO. 6	OUTDOOR LEARNING CLASSROOM KITS	COVID-19 Community Response Fund	5,000
COLUMBIA BASIN ENVIRONMENTAL EDUCATION NETWORK (CBEEN)	OUTDOOR LEARNING EQUIPMENT (PRESCHOOL/DAYCARE/DAYHOME)	COVID-19 Community Response Fund	4,950
EDGEWATER RECREATION SOCIETY	PRESSURE WASH AND RE-SEAL EXPOSED AGGREGATE PATIO	CVCF Community Fund	1,200
WILDSIGHT INVERMERE	REQUIEM FOR A GLACIER	KSCU Community Fund	2,500
WINDERMERE VALLEY YOUTH CENTRE SOCIETY	SAFE SPACE UPGRADES	COVID-19 Community Response Fund	3,000
RADIUM HOT SPRINGS PUBLIC LIBRARY	SAFETY EQUIPMENT	COVID-19 Community Response Fund	700
RECREATION ADAPTIVE SOCIETY	SEATED ADAPTIVE SLEDGE	COVID-19 Community Response Fund	5,000
WINDERMERE VALLEY YOUTH CENTRE SOCIETY	TRAVELLING SKATE PARK (MOBILE YOUTH CENTRE)	COVID-19 Community Response Fund	1,640
REGIONAL DISTRICT OF THE EAST KOOTENAY/Fairmont & District Lions	WILDER MEMORIAL PARK	Gordon Wilder Memorial Fund	4,144
ROCKY MOUNTAIN SCHOOL DISTRICT NO. 6	WINDERLAND OUTDOOR LEARNING SPACE	Opportunities for Youth Fund,	5,000
COLUMBIA VALLEY SEARCH AND RESCUE	WINTER BACK COUNTRY ACCESS - PURCHASE OF A NEW SNOW MOBILE	Our Children's Legacy Fund	7,000
DISTRICT OF INVERMERE/Toby Creek Nordic Ski Club	YOUTH DEVELOPMENT PROGRAM EQUIPMENT	COVID-19 Community Response Fund	2,500
DISTRICT OF INVERMERE/Columbia Valley Youth Soccer Association	YOUTH SOCCER: BUILDING BACK STRONGER	Doerr Family Fund, Fairmont Family Fund	2,500
TOTAL COMMUNITY GRANTS AWARDED IN 2021			\$184,488

NEW & EMERGING FUNDS

New initiatives are often brought forward to the Columbia Valley Community Foundation. They could be memorial funds to honour a loved one's passing, a local initiative to support a great cause, or a visionary plan to help raise up our community. We celebrate these new and emerging funds, and share them to inspire and educate!

Take, for example, the **Radium Rotary Mental Health Wellness Fund**.

Strategic planning led the Radium Hot Springs Sunrise Rotary Club to identify four areas of focus: one was mental health and wellness. Erin Palshniuk, president, explains that the club also conducted a needs assessment of the Columbia Valley and found that mental health and wellness supports needs more sustainable financial investment. With a stigma surrounding mental health, the club wants to help people understand that we can all become champions for mental health and wellness.

The CVCF supported the Radium Hot Springs Sunrise Rotary Club by assisting in the creation and management of this fund.

"The foundation manages the fund for us which is a great support to our club, so we can focus on fundraising for the fund," explains Erin.

The **Woodcarver Park Fund** is another example of the CVCF's support in action.

Woodcarver Park is designed as a tribute park to Radium's famous resident Rolf Heer, an eccentric woodcarver whose house of a Thousand Faces drew curious passersby for decades to his home. Rolf passed away in 2020 from cancer.

"Rolf bequeathed his property to the Radium Village Arts & Culture Society with wishes that the park be a place for people to gather, children to have fun, musicians to play and artists to showcase their talents," explains Val Bracken, project spokesperson.

The Radium Village Arts & Culture Society has partnered with the Village of Radium and the Columbia Valley Community Foundation to assist with the management of funds raised and grant application advice for the project. Also, the Radium Chamber of Commerce, Columbia Valley Chamber of Commerce and the Radium Rotary are very supportive with promotions to assist with fundraising efforts.

"The CVCF is a local charitable organization that has a wealth of experience with raising the capital required for community projects such as Woodcarver Park. Their connections with potential donors, tax advantages and providing advice on applicable grant applications for this project made a great choice for a partnership opportunity," says Val. "The committee is very thankful for their support."

The **Gord Forbes Memorial Fund** is a very special fund created in the last year for a much loved homeowner in Fairmont's Columere Park.

"This valley was Gord's most favourite and special place," recalls his daughter Lindsay. "The valley brought him joy, a sense of purpose, community and belonging."

Gord's passions were getting outside, participating in sports, teaching kids how to water ski, fix something, help someone, and provide (sometimes unsolicited) advice, shares Lindsay.

This fund will be used to pay for projects that speak to Gord's passions: build and maintain parks and recreation areas in the valley, youth skill development, affordable housing, and other projects that directly support the Columbia Valley community.

Visitors and locals alike are drawn to the stunning blue depths of Lake Windermere and Columbia Lake. Both are



Woodcarver Park project plan.

precious resources, guarded carefully by the **Columbia Lake Stewardship Society** (CLSS) and the **Lake Windermere Ambassadors** (LWA).

These two organizations oversee their respective lakes, undertaking water quality testing, providing valuable information to stakeholders, and encouraging all of us to love and value these resources.

Each organization started their own endowment fund in 2021 to improve their financial sustainability. The CVCF also provided community grants to both organizations this past year.

The Lake Windermere Ambassadors bought supplies for outreach events such as free educational children's camps, lab work fees for water quality analysis, staff time, transportation to sampling spots and more.

There are some major concerns currently facing the Columbia Valley, says Amy Baxter, LWA program coordinator, including increased development pressures on aquatic ecosystems, lack of understanding of fish populations, and limited public access.

"We wanted to undertake this project as it addressed these environmental and community concerns through community engagement in water quality monitoring, translation of the water quality monitoring into achievable actions to be taken by local government and the community, and revitalization of the Lake Windermere foreshore," explains Amy.

The Columbia Lake Stewardship Society used their funding to conduct water quality and quantity monitoring, as well as community / stakeholder education.

"This project was essential towards contributing to our database of hydrologic information and continuing to support our past, present, and future work on the Columbia Headwaters," explains Leah Downey, CLSS program coordinator. "We are working to support the balance between the needs of our local communities and the health of Columbia Lake through enhanced environmental stewardship and educational opportunities."

Lake Windermere Ambassadors and Columbia Lake Stewardship Society work hand-in-hand to protect the headwater lakes of the Columbia River. This past year, the two organizations expanded their partnership to work more closely together.

"In 2021 we worked together to integrate our projects and collaborate for long-term planning. We also conducted fish population surveys on the two lakes, and worked together to expand our free educational children's camps," reports Amy.

Leah adds that the two organizations successfully completed a Columbia Headwaters Fish Population Survey together in 2021.

"This was a baseline study, gathering information about the local native fish populations within the Columbia Headwater Lakes. Coordinating this project with the Lake Windermere Ambassadors allowed us to share resources and information more readily, as well as creating efficiency and reducing any redundancy towards future initiatives."



CLSS and LWA Kids Summer Camp.

"We are working to support the balance between the needs of our local communities and the health of Columbia Lake through enhanced environmental stewardship and educational opportunities"

STUDENT AWARDS

2021

"We are lucky to live in a place full of so much talent! It is such a pleasure to support people as they pursue their passions and dreams. The wonderful members of the Grants Committee are always dazzled by the skills and work of the applicants-- from new grads just beginning their post-secondary pursuit to someone making a career transition. It is work we all feel very grateful to be a part of, thanks to the support of donors."

— Sheena Swierenga – Chair, Grants Committee

Jacob Zehnder



Leaving the valley is hard and getting an education on the eastern end of Canada creates a separation between yourself and your support systems. The Arnold Ellis Scholarship has made me feel the support of the valley community and reminded me of the value of the place I came from."

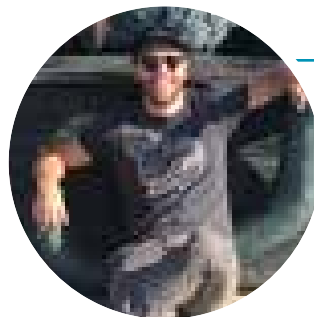
Sarah Davis

I want to thank each person at the Columbia Valley Community Foundation for allowing me to worry a little bit less about where I will be living for the Fall 2021 school year. Receiving this award means so much to me and I will always remember the generosity of donors in the Columbia Valley. Thank you."



"Thanks in part to CVCF, I have been able to excel in my program of study and plan a master's thesis that will contribute back to my community. In my second year of study, I will be examining how rural communities in the European Union have used broadband technologies to help foster community-based development and sustainability strategies and how those strategies can be transferred back to the Columbia Basin."

Blake Glassford



"Although Victoria is an amazing place to live, it is notorious for its ongoing housing crisis; due to the significant Covid-19 impacts the university was unable to provide all students with on campus housing. Due to this I have been living off campus, and paying rent; the money from this award has gone towards my rent, as well as groceries, and a membership to a local gym. The ability to have a gym membership has allowed me to continue strength training, as sports were such a crucial part of my high school life; and has allowed me to continue making healthy habits, which keep me mentally and physically fit. Overall this grant has allowed me to start a comfortable life in a new city, which I am extremely thankful for."

Haley Kubian

Laura Stiz

Like many students, I depended on my summer job as a server to save money for the upcoming school year. Due to the closure of bars and restaurants, or establishments only serving take-out, I was not able to save the money that I had in previous years and was afraid I would not be able to afford to go back to school. Thankfully, the Columbia Valley Community Foundation came to my rescue."



This award has allowed me to maintain my commitment to this community and begin to build a better life for my family. I am grateful for this opportunity. I sincerely intend to use my Bachelor of Social Work degree to continue contributing to positive services that improve the quality of life for Columbia Valley residents."

Kelsey Prichard

Taylor Hart

For myself, receiving this scholarship has made me feel more connected to my community, even though I am away at school, because I know that I have the support of the Columbia Valley and its residents cheering me on."



Calissa Tamelin

The ability to receive financial help from my community means the world to me, and gives me the opportunity to make my post-secondary goals achievable. The value of furthering my education at post-secondary is something I have always been working towards, and knowing that I have support from my hometown and community gives me more reason to want to succeed."

Arnold Ellis Scholarship Fund

\$2,000/Award

Amelie Argouin
Emma Bernicot
Sarah Davis
Sydney Edlund
Claire George
Blake Glassford
Julia Halwa

Angela Hann
Taylor Hart
Jaime Jenkinson
Lukas Jerabek Schan
Dana Kendall
Haley Kubian
Sonny Langton

Taylor Lightfoot
Ashley McDiarmid
Graham Norquay
Ezekiel Pascua
Kelsey Prichard
James Rose
Madeleine Sherk

Laura-Vittoria Stiz
Erin Stockley
Calissa Tamelin
Meghara Walsh
Katherine Watt
Jacob Zehnder

Awards adjudicated by the CVCF Grants Committee: Arnold Ellis Scholarship Award, Alan J Witherspoon Fine Arts Award, Bidder Bursary Award, and Erwin Kloos Memorial Award.

The Tom Sanders Memorial Award recipients are selected by the Kinsmen Club of the Windermere Valley, and the Greg Constable Bursary Fund recipients are selected by DTSS and Greg Constable; these parties conduct the application and review process in an advisory role to the donor advised fund.

Tom Sanders Memorial Award

\$3,000/Award

Ava Merrill (\$2,000), Masha Stich (\$1,000)

Greg Constable Bursary Award

\$500/Award

Oja Rose

Bidder Bursary Award

\$800/Award

Kelsey Prichard

Erwin Kloos Memorial Award

\$400/Award

Dana Kendall, Graham Norquay

Alan J Witherspoon Memorial Fine Art Award

\$3,500/Award

Amelie Argouin (\$2,000)
& Ezekiel Pascua (\$1,500)

Total Student Awards in 2021
\$69,800**

**\$7,500 of 2021 Awards are yet to be used at May 31, 2022

Fields of study pursued by recipients

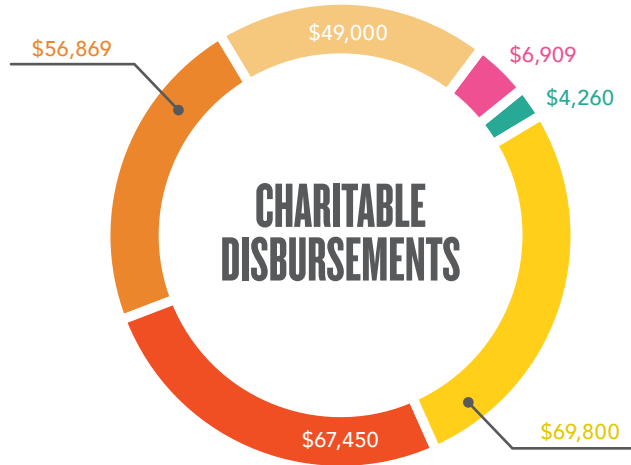
- Bachelor of Education
- Civil Engineering
- Commerce/Accounting
- Computer Science
- Digital Arts/Graphic Design
- Ecology
- Elementary Education
- Engineering & Applied Science
- Engineering/Architecture
- Horticulture Technologist Diploma
- Hospitality and Tourism Management
- Information Design
- Interior Design
- Kinesiology
- Legal Assistant
- Mechanical Engineering Tech
- Neuroscience
- Nursing
- Philosophy/Statistics
- Psychology
- Rural Planning & Development
- Science/Nursing
- Social Science/Business Administration
- Sociology
- Social Work
- Women's and Gender Studies
- Writing for Film/TV

FINANCIAL HIGHLIGHTS

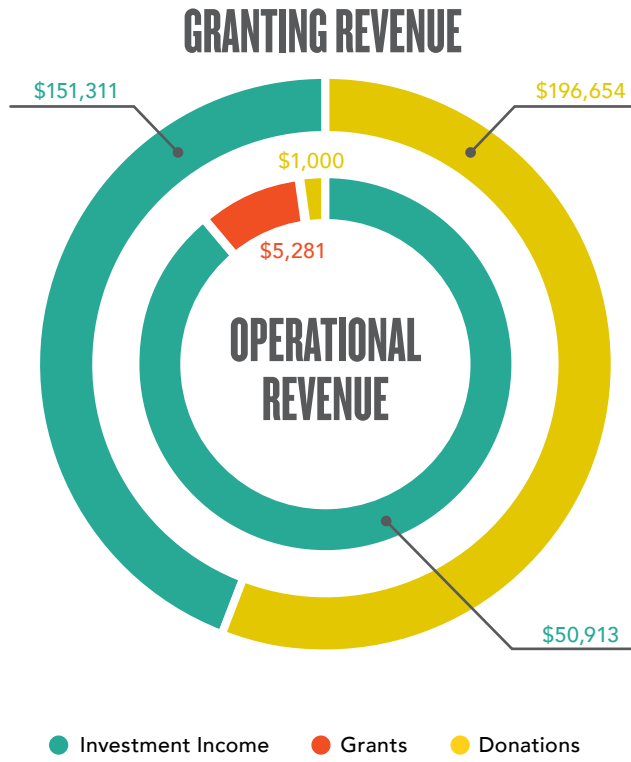
of the Year Ended December 31st

Full financial statements are available upon request

ENDOWMENT FUND INFORMATION



- Student Awards
- COVID-19 Community Response Fund
- Community Granting
- Flow-Through Grants
- Designated Fund Grants
- Other



- Investment Income
- Grants
- Donations

ENDOWED FUND BALANCES 2021

Value represents Original Contribution plus Undistributed Investment Income

TYPES/NAMES OF FUNDS	Dec 31, 2021
Columbia Valley Community Fund	416,077
Kootenay Savings Community Fund	112,700
DESIGNATED FUNDS	
Columbia Lake Stewardship Society Endowment	5,069
Columbia Valley Arts & Culture Fund	29,089
Columbia Valley Food Bank Fund	224,285
Jim Ashworth Fund (sub-fund of CVFB)	46,836
Environmental Education Endowment Fund	48,966
Hospice Society of the CV Fund	45,962
Invermere Public Library Endowment Fund	20,894
Lake Windermere Ambassadors Endowment Fund	125
Radium Hot Springs Public Library Fund	25,630
Schnider Family Legacy Fund	21,209
DONOR ADVISED FUNDS	
Gordon Wilder Memorial Fund	50,001
Our Children's Legacy Fund	83,198
Sherry and Harvey Doerr Family Fund (BC)	101,373
Tom Sanders Memorial Fund	111,999
FIELD OF INTEREST FUNDS	
Alan J. Witherspoon Memorial Fine Arts Fund	101,504
Ann Tilley Memorial Fund	7,039
Arnold Ellis Scholarship Fund	1,515,291
Bidder Bursary Fund	10,192
Erwin Kloos Memorial Fund	15,274
Fairmont Family Fund	28,115
Gord Forbes Memorial Fund	5,198
Opportunities for Youth Fund	94,032
Radium Rotary Health & Wellness Endowment Fund	2,438
OPERATING ENDOWMENT FUND	
CVCF Operating Endowment Fund	629,833
TOTAL	\$3,752,326

The Columbia Valley Community Foundation manages charitable gifts from donors whose generosity allows us to create permanent, income-earning funds that are distributed in the areas the donors wish to support.

Donations to the Foundation may be designated or undesignated by the donor:

- **Undesignated** donations under \$1,000 are allocated to operations.
- **Designated** funds can be directed to endowed, flow-through or operating funds.

FUND TYPES WITHIN THE FOUNDATION'S ASSETS

ENDOWED FUNDS are endowed either permanently or for a specific period of time (generally 10-30 years). The contributed principal is invested and the returns from the investments are allocated to grants and operating fees. The donor can provide succession management instructions for the funds during, or after, their lifetime.

- **Community funds** give the Foundation the greatest flexibility to respond to current community needs. Donors can create named funds within the Community Fund.
- **Designated funds** are granted to specific, named charities.
- **Donor Advised** funds are normally established by individuals or families who wish to remain involved in granting decisions and disburse grants annually.
- **Field of Interest funds** are established by donors who wish to support their charitable interests: student awards, arts and culture, environment, recreation, literacy, health and safety, social services, community facilities, youth or education.

FLOW-THROUGH FUNDS are restricted funds. The principal of (Restricted Flow-Through) Funds may be granted at any time as specified by Foundation policy or the donor, generally within 12-36 months.

OPERATING FUNDS come from non-designated or designated donations, and returns on investments from operating endowment funds available to the Foundation for its operations.

FLOW THROUGH FUNDS	
COVID-19 Community Response Fund	5,100
Flow Through Fund	6,056
Greg Constable Toyota Corolla Fund	2,544
John Mason Memorial Fund	11,838
Mountain Relief Fund	1,465
Radium Rotary Health & Wellness Fund	300
Stay In School Fund	5,532
Wittke Family Fund	3,968
Woodcarver Park Fund	12,022
TOTAL	\$48,825

The fundamental role of The Columbia Valley Community Foundation is to engage in community granting, addressing local community needs by supporting local projects and people. This year, the Foundation celebrated its 20th anniversary, with the first endowment fund established in 2001. Since then, CVCF has granted over \$1,000,000 into the community.

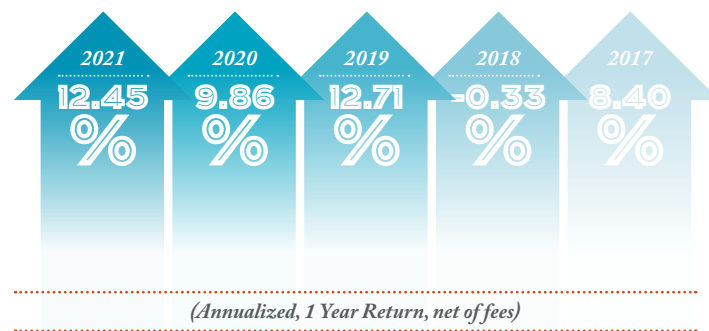
The Columbia Valley Community Foundation accepts donations of money which it permanently invests so the funds earn interest, every year, forever. The Foundation invests donor contributions with the Vancouver Foundation and Columbia Basin Trust which ensures the preservation and enhancement of these assets. Each year, interest earnings from these investments fund grants and scholarships to local nonprofits and students. Projects that receive funding come from our communities and reflect the identified needs of the Columbia Valley.

"Contributions big and small make this possible. Thank you, Donors, for helping to ensure a vibrant Columbia Valley!" - Anne Glassford, Director & Chair of Finance Committee

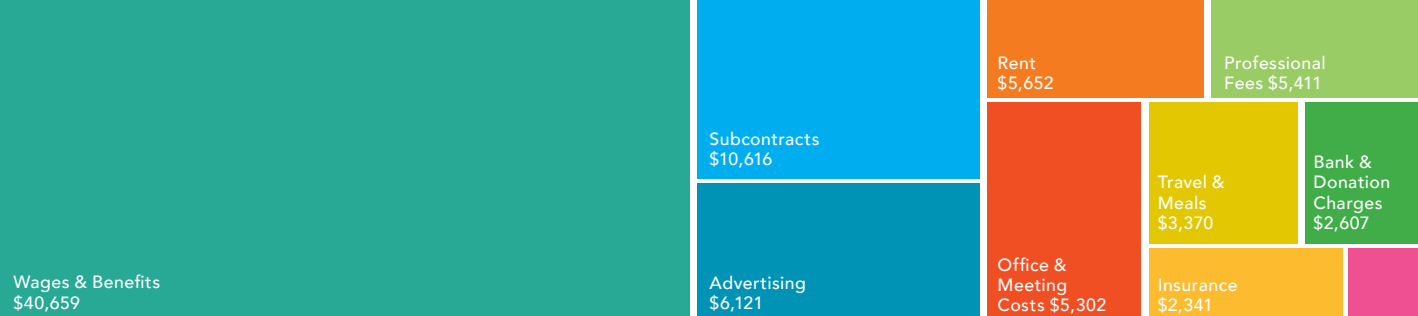
"When we give cheerfully and accept gratefully, everyone is blessed."
- Maya Angelou

Investment Performance (to Dec 31, 2021)

VANCOUVER FOUNDATION



OPERATIONAL EXPENSES



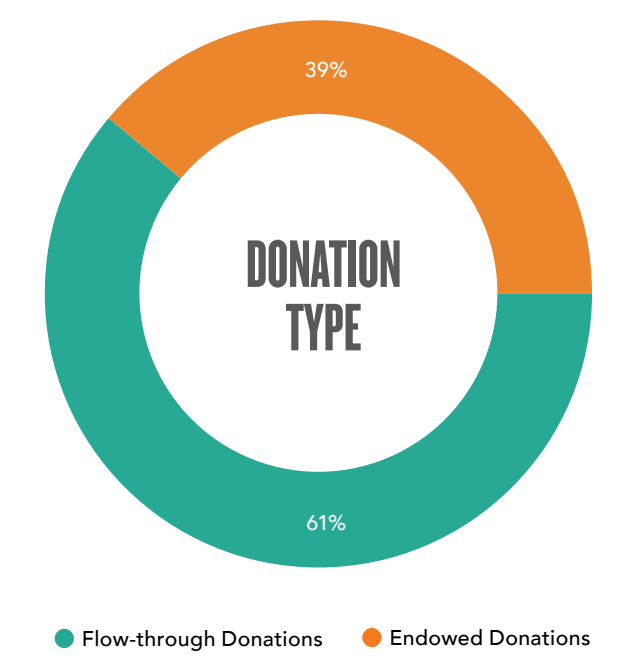
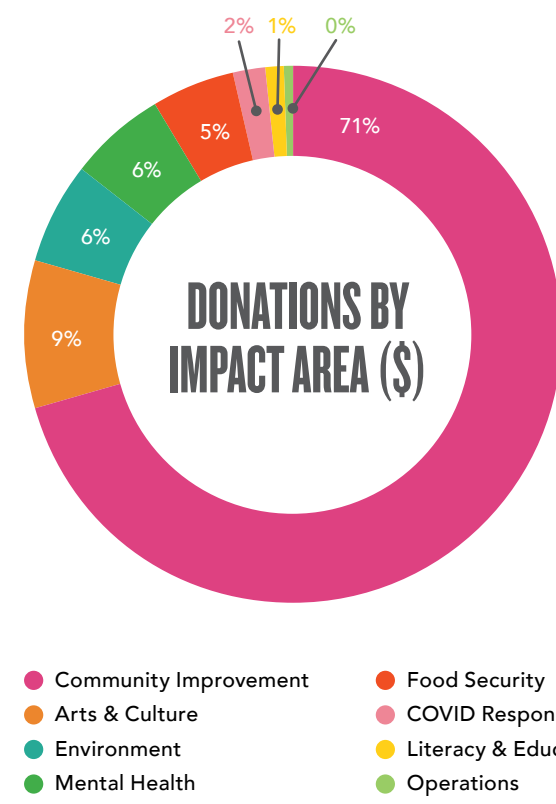
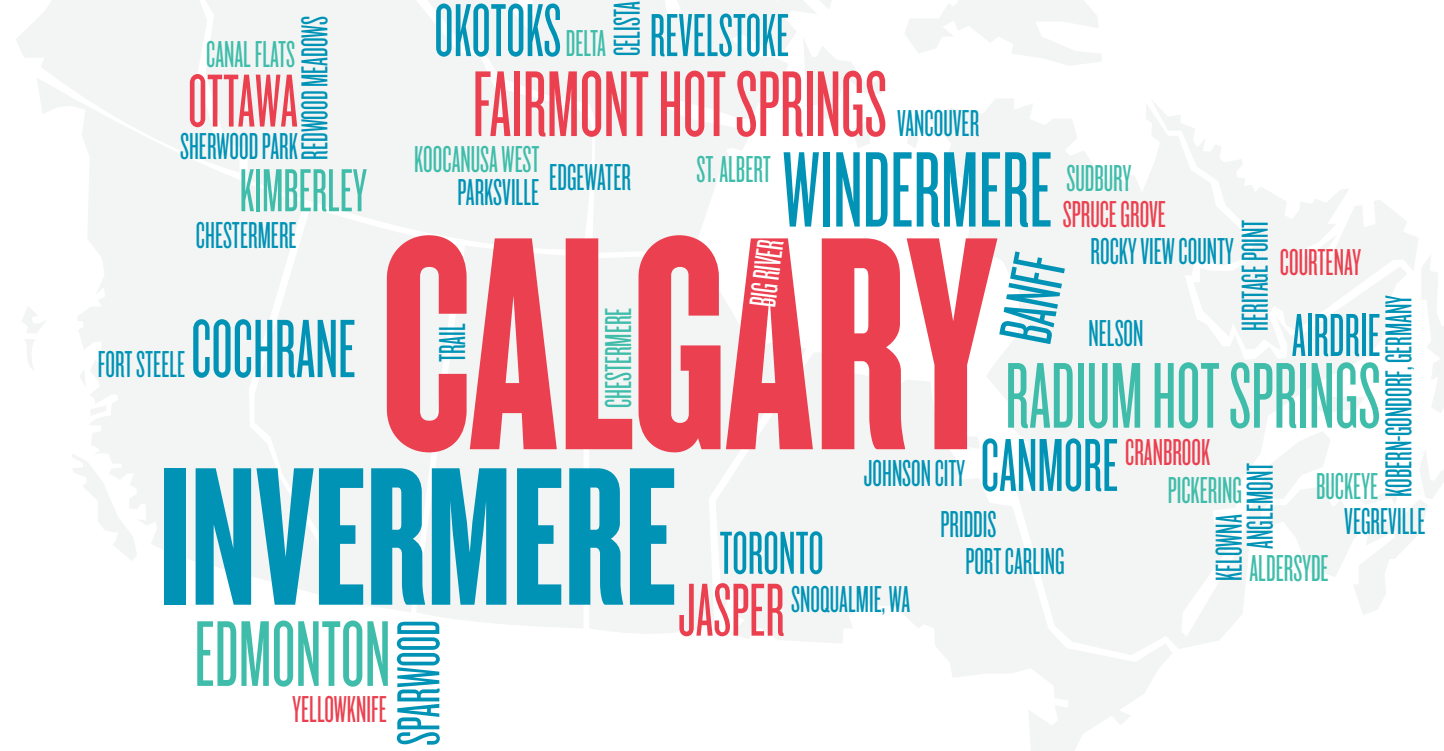
Membership & Dues

We are grateful for the support of these individuals, families, and organizations

Thanks to all who have placed their trust in the Columbia Valley Community Foundation.

2021 SUPPORTERS

- | | | | | |
|--|---|--|-----------------------------------|---|
| Adam Hall-Sharp | David Walker | Jenna Hamill | Mardelle Sauerborn | Ryan and Michelle Young |
| Al Miller | Dayna Mill | Jenneice Larsen | Margaret Binjet | Ryan Thompson |
| Al Trepanier | Dean & Mary Townson | Jennie Bedford | Marilyn & Matthew Smith | Sandra Wenz |
| Alec Fader | Deanna McFarlane | Jessica MacIsaac | Marilyn Bradley | Sanne van der Ros |
| Alison Bell | Deb Perkins | Jessie Stoney | Marion Labrie | Scott & Beth Iredale |
| Allan Markin | Deb Witherspoon | Jill Hager | Mark Beattie | Scott and Kristi Eriksen |
| Andrew Bradford | Debra Tetteh-Wayoe | Joan Gallaway | Mark Duk | Scott McClain |
| Andrew Wiswell | Dee Conklin | Jocelyn Flanagan | Mark Kotris | SCR Investments Inc |
| Angela Drozda | Denise & John Hooks | Jocelyn Robinson | Mark Olson | Shannon Coon |
| Angela Fissette | Denise Wanchulak | Jocelyn Wolfe Bucholtz | Marla Lucas | Sharlene Lailey |
| Angela Williams | Donald Tomkinson | Joe Hildes | Marlene Binda & | Sbear Heig |
| Angus Fraser | Donna Maksymec | Joel Lipkind | Jim Bolokoski | Sherry Doerr |
| Anna Glassford | Doucette Distillery | John Crosland | Marlisse Baker | Sbi Campbell |
| Anna King | Doug Bonner | John Hague (in memory of Stewart W. Hague) | Martha Christie | Sprung Instant Structures Ltd |
| Anne Jordan | Doug Charlton | John Langille | Martha Olineck-Evans | Stacey Ursulescu |
| Anonymous | Doug Kay | John Newman | Matthew Colville | Steph Klein |
| Arden Baker-Hadley | Douglas & Ann McIntosh | John Pitcher | Meg Duckworth & | Stephanie and Brian Felesky |
| Ashley Webster | Drew Tumbach | John Pitche | Greydon Robinson | Stephanie Maxwell |
| Aspire Professional Corp | Duncan Whittick | Judi Poole | Meghan Powell | Steve Beaton |
| Barb Hagel | Effusion Art Gallery + Glass Studio | Juliet Craig | Melanie Timmons | Steve Elekes |
| Barb Hogan | Eighty Eight Capital Corporation | Karel Wood | Melissa Cook | Steve Giacomin |
| Barb Kloos | Eloise Berry | Karen and John Leeds | Melonie Michaud | Steve Power |
| Barbara Atkinson | Erika and Tyler Bowley | Karen Irvine | Mia King | Stoked on Science Education |
| Barjac Construction Inc | Erin Luong | Karen Nielsen | Michael Jessen | Sue Trigg |
| Bill and Margie McGonigal | Erin Palasniuk | Kata Glumac | Michael Yuen | Susan & Doug Clovechok |
| Bobby Kwas | Erin Palasniuk | Katherine Harmsworth | Michelle McKenna | Susan Duncan |
| Brian & Brenda Lenzin | Everitt Long | Kathie McMorran | Michelle Tosi | Susan Lucas |
| Brian Mellum | Franciszek Smalec | Kathy Sutherland | Mike Foran | Suzanne Kear |
| Cal & Shelly Jacober | Frank Kopitar | Kayja Becker | Moen & Company | Tablon Sweenie |
| Carl Harvey | Fraser Shaw | Keith & Jane Henke | Morgan Hoffert-Walker | Take Me Outside |
| Carla Christie Hamilton | Friends of the IPL (Invermere Public Library) | Kellie Keefer Beck | Morris W Hucal Prof Corp | Taynton Bay Spirits |
| Carol and Ward Mallabone | Gail & Mike O'Reilly | Kelly Schmitt | Nancy Trigg | Terra McKay-Gourley |
| Carol Kesben | Gary Niemi | Kelsey Baker | Nancy Wilson | Terralene Beatty |
| Carolyn & Steven Torbjelm | Gary Schultz | Kelsey Eade | Olivier Favreau | The Maja Foundation |
| Carson Family | Gary Sleith | Ken and Bev Buckley | Patty Harding | Thomas Foster |
| Cathy McWatters | Gary Steen | Ken Mitchell Contracting | Paul Webster | Thomas McDonald |
| CBASS Inc | Gina Borvman | Ken Woldum | Pete & Sarah Bourke | Tony Smith |
| Cbad Febr | Glenn Hamilton | Ken Zeller | Peter & Lorraine Bolton | Tracey Ast |
| Cbantel Moen | Glenn McNamara | Kerri-ann Andrais | Peter Brimacombe | Tracey Cuming |
| Charlene Nieman | Gordon Phillips | Kevin Harvey | Peter Huang | Tracy Cody |
| Cbris Wills Personal Real Estate Corp | Gordon Weicker | Kim Arial | Peter McMabon | Tripro Real Estate Service |
| Christine Prefontaine | Grant Fagerbeim | Kim Hutchings | Peter Sandal | Trish Stiles |
| Christopher Olsen | Grant Wilde | Kimberly Murray | R&R Miller Aquisitions | UK Giving Foundation |
| Christopher Potter | Greener Grass Ltd | Kirk McNamara | Rachel Curran | Victoria Gubic |
| Cindy Davis | Greg & Adele MacEachern | Kootenay Savings Credit Union | Randy & Doreen Risdabl | Viewpoint Foundation |
| Cindy Royer | Greg Pollard | Kristin and Cam McIntosh | Randy Pasay | Vivian E. Hill Professional Corporation |
| Clara Reinhardt | Gregg Scott | Kristin Howard | Real & Claudette Michaud | Vivid Ink Labels |
| Claudia Beckhausen | Group 10 Engineering Ltd. | Lang Ellison | Reece Kosek | Vivienne Huisman |
| Claudio Bulfone | Gwen Becker | Laura Lovett | Reta & Daryl Jenken | W. Brett Wilson |
| Columbia Basin Environmental Education Network | Hardscapes Inc | Laurie Duke | Richard Kasper | Wallace & Carey |
| Copper Point Limited | Heather Glenn | Lavorie Mack | Richard Suignard | 100th Anniversary |
| Corbin Coyes | Helen Kipp | Layna Lester | Richard Thompson | Warren Coates |
| Cori Wilisky | Holly Dobek | Lesley Hayes | Richard Thompson | Warren Jukes |
| Corrina Tyler | Hugh Borgland | Leslie Edwards | Rick & Daphne Hammond | Wendi McAfee |
| Cory Wagner | Hugh Simson | LFK Construction | Ritchie Braund | Wendy Booth |
| Cory Wagner | Ida & Gunter Rapp | Lisa Kerr | Rob Orchiston | Wendy Cook |
| Crystal Pelton | Insideout Landscapes & Maintenance LTD | Lisa Vlooswyk | Robert & Barbara Shaunessy | Wendy Mitchell |
| Columbia Valley Food Bank | Invermere Home Hardware Building Centre | Lisette Cameron | Robert Hamanishi | William & Sandra Beamer |
| Dalphine van de Walle | Invermere Liquor Store | Lizzie Midyette | Robert Nimmo | William Brown |
| Dana Cottreau | Isabelle Bujold-Lelek | Lment Stone Ltd | Robert Russell | William Redbead |
| Daniel & Kathy Zurgilgen | Jaime Freestone | Lori Baugh Littlejohns | Robin Hotchkiss | Yvonne Thevenot |
| Daniel Hamilton | James Brewington | Lori Markowsky | Rod Turnbull | Zubin Kotbawala |
| Danielle Hagel | James Neilson | Lori Randall | Rolfe Kwasnycia | |
| Darwin Little | Jan Erica | Lori Topp | Romy Yourex | |
| Daryl Rudicbuk | Jane Iburgood Sagal | Lorry Dorren | Ron Pelachuk | |
| Dave & Nellie Seibel | Jason Werle | Louise Lee | Ron Poelzer | |
| Dave and Joan McLeod | Jeannine Duperron | Louise Mackellar | Ronald & Mildred Oliver | |
| Dave Bradley | Jeff & Stacie West | Lynn Hodgson | Rosenau Transport Ltd | |
| Dave McCann | Jeff Irvine | Lynn T McNeill | Ross Ryan Family | |
| Dave Rutten | | MacDonald & Company | Rotary Club of Radium Hot Springs | |
| David Charlton | | | Ruth Zebnder | |
| | | | Ruthanne Kelly | |



Donations can be made online at valleyfoundation.ca or sent via cheque to Box 991, Invermere BC V0A 1K0. If you are interested in establishing a legacy that will continue to better our community, reach out to us at info@valleyfoundation.ca or 250-342-2845 to talk about creating a fund.

BOARD & VOLUNTEERS



We are grateful for our exceptional Board of Directors! These amazing volunteers have dedicated their time, shared openly their expertise, and bring a passion for the enrichment of our community.

2021 Board of Directors

New Board Members:

Deborah Witherspoon
Jenny Manhas
Kelsey Eade
Lawrie Mack

Ongoing Board Members:

Anne Glassford
Lang Ellison
Barb Kloos
Sheena Swierenga
Wendy Booth

Departed Board Members:

Kyla Lam
Katherine Harmsworth
Lori Littlejohns
Shawn Raven

2021 Executive Positions:

Wendy Booth *Chair*
Anne Glassford *Treasurer*

Lang Ellison *Vice Chair*
Barb Kloos *Secretary*

A shout-out and gratitude to our Committee volunteers!

Jane Thurgood Sagal, Grants Committee | Katherine Harmsworth, Grants Committee
Nancy Wilfley, Grants Committee | Shawn Raven, Grants Committee
Kyla Lam, Finance Committee

If you are interested in joining our Board of Directors, or supporting the Columbia Valley Community Foundation as a Committee Volunteer, please reach out!

THANK YOU

WANT TO GET INVOLVED?

We welcome donors, supporters and volunteers to join our board, committees or initiatives. Call today! Visit us at www.ValleyFoundation.ca or connect with us on social media.

 @columbiavalleycommunityfdtn

 @CVCommunityFdn

 Columbia Valley Community Foundation



Mailing address: P.O. Box 991, Invermere, BC V0A 1K0

Office location: 651 Hwy 93/95, Invermere, BC V0A 1K0

250-342-2845 | info@valleyfoundation.ca

Charitable BN 88261 8713 RR001 | www.ValleyFoundation.ca

We sincerely appreciate the contributions and partnerships of the following organizations:



We are a proud member of our national organization, Community Foundations of Canada:



COMMUNITY
FOUNDATIONS
OF CANADA

Design & Layout: Justin Keitch
IgniteCreative.ca



Copywriter: Lorene Keitch

