



Members of
Columbia Valley Youth Soccer
2017 Grant Recipients



ANNUAL 2017 REPORT



Because Community Matters...



Barbara Kloos
Chair



Laurie Klassen
Executive Director

message from the
**CHAIR &
EXECUTIVE
DIRECTOR**

Community support swelled for the Columbia Valley Community Foundation in 2017, a trajectory that was recognized at the Columbia Valley Chamber of Commerce Business Excellence Awards in October, when the Foundation was honoured with the Community Impact Award.

A number of new initiatives undertaken by the Columbia Valley Community Foundation over the last year have helped raise awareness of our role within the community, increased public outreach and community engagement overall, and led to the establishment of five new funds.

These initiatives included: hosting a Vital Conversation on the theme of belonging in our community, which was made possible by funding from Community Foundations of Canada on the occasion of Canada's sesquicentennial; and holding the Columbia Valley Community Foundation's first information session in November, the first of many as this occasion was extremely well-received and set the foundation for more to come.

At these events, strong interest and appreciation was expressed in the Columbia Valley Community Foundation's role in helping to improve the quality of life for the Columbia Valley community.

From a marketing perspective, the Columbia Valley Community Foundation's branding underwent some changes. A new updated logo was created, which is being used across all communications platforms, from the website and social media channels to promotional materials both online and in print; and an overall refresh to the website took place, which has helped align the Foundation's online presence with its community presence, making it much more user friendly.

Further contributing to the website's ease of use, 2017 saw the implementation of an online Community Grant form, which was successfully piloted during the fall 2017 grant intake. By offering an online form, the Columbia Valley Community Foundation is making it easier for applicants to apply for funding.

Internally, the Foundation evolved on several levels. To facilitate and expedite the management of funds, there was the purchase of new fund and donor management software. We continued to strengthen our bonds within the provincial and national Community Foundation networks by attending two separate conferences: the Community Foundations of Canada 2017 National Conference in Ottawa in May on the theme of "Belong 2017"; and the BC Community Foundation gathering in September 2017 in Kelowna. Both conferences were forums for some very innovative ideas that we are excited to introduce locally.

Further contributing to our community impact, in 2017 we began spearheading the project of developing an online Volunteer Network Hub with the aim of matching volunteers with local organizations in need of volunteers, a priority objective that was identified in the results of our 2016 Vital Signs survey. Funding has been secured and work has begun on the website. Not only will this pilot project support and strength community capacity in the Columbia Valley, but, once completed, it will serve as a prototype for other communities to model.

Yours in Giving, **BARBARA KLOOS** **LAURIE KLASSEN**
Chair, CVCF Executive Director, CVCF



A Unique Way to Give Back to Our Community

The Greg Constable Toyota Corolla Fund

There is a whole host of issues that society faces, and some sectors of the population deal with issues more invisible than others. One such issue, according to Invermere resident Greg Constable, is single parenting. Greg lost his wife to cancer 10 years ago and chose to bring up his two young children on his own. As a high school teacher, his experience as a single parent caused him to look at the high school graduation ceremonies he attended each year through a different lens.

"My own situation opened my eyes to the fact that there was no bursary targeted for children of a single, unsupported parent," said Greg. "While not a major issue for my family — my wife's lengthy illness allowed us to prepare for our children's education — I realized very quickly that a sudden death of one parent could very easily prevent a student from receiving post-secondary education."

On the eve of his retirement, he decided to take action by parting with his beloved car in a benevolent fashion — a 1982 Toyota Corolla he had been driving to David Thompson Secondary School for 35 years since his first day teaching there. Greg began accepting donations to fund a single \$500 bursary for a student in need who was the child of a single parent. As part of the funding drive, names were added to a list and by luck of a draw, the winner would receive Greg's car. When all was said and done, enough money was raised to fund five \$500 bursaries.

Robert Juffs was the lucky winner who drove off in the Corolla, but though the car was gone, Greg decided to establish a fund for the bursary to keep it open in perpetuity.

"It was suggested that the Columbia Valley Community Foundation might be a good avenue via which this could be done," he said. "The fact that the Foundation would take care of all the administrative work, including the collection of money and issuing tax receipts, was a very important factor for me."

Raising the first \$2,500 far exceeded Greg's expectations and he is grateful to be able to help students whose needs were previously unaddressed.

"If at least one student is now able to attend a post-secondary institution because of my bursary, I will feel that it has been a success."

The Greg Constable Toyota Corolla Fund is a growing fund that accepts donations. To donate, visit: <http://valleyfoundation.ca/donate-now/>



Greg Constable with his 1982 Toyota Corolla

When all was said and done, enough money was raised to fund five \$500 bursaries.

CREATING A LEGACY

for the Hospice Society of the Columbia Valley



L to R: Maria Kliavkoff, Executive Director,
Barb Gagatsek, Chair,
Donna Gustavson, Admin Assistant

Hospice Society of the Columbia Valley Endowment Fund

By 2030, one in four B.C. residents will be 65 and older, and based on a seniors housing study for 2031, the Columbia Valley is on track to be one in three. What these numbers reveal for the Hospice Society of the Columbia Valley is a fast-growing demand for its services in the years to come. To ensure the Hospice Society's long-term sustainability as these numbers reach fruition, an endowment fund was set up with the Columbia Valley Community Foundation in 2017.

"We just celebrated our fifth anniversary in 2017," said executive director Maria Kliavkoff. "Establishing the fund was part of our five-year plan to have some visible evidence of sustainability, so this was actually meeting a fifth-year mandate."

Maria first came across the Community Foundation concept at a BC Hospice Palliative Care Association Conference where she attended a workshop session that looked at ways to generate sustainability for Hospice Societies across the province.

"It became clear the CVCF was linked to a larger community and that money would be safe and would meet our needs and our donors' needs," she said. "It is a way for us to save for tomorrow, ensure sustainability in the long term and help fund Hospice activities beginning next year."

By offering no-cost end of life and bereavement support and public education opportunities, the Hospice plays a crucial role in promoting community health and well-being.

"North America is a grief phobic society. We tend to bury and carry our grief," said Maria. "To promote healthy mourning and to teach people effective ways to convert their grief to mourning helps those who are struggling and educates the community on how to be compassionate in supporting those who are grieving."

Thanks to a generous donation and matching funds, the Hospice Society of the Columbia Valley Endowment Fund will have interest revenue that can be put to use in 2019.

"It is our hope that future generations learn to embrace the processes of death and dying so that together we create healthy and compassionate communities in the Columbia Valley and beyond."

The Hospice Society's fund is set up as an "open" fund so that anyone can make a contribution.

To donate, visit: <http://valleyfoundation.ca/donate-now/>

Donor Spotlight

The Kloos Family

A Legacy for a Beloved Member of our Community – Erwin Kloos Memorial Fund

Erwin Kloos was a well-known face around the Columbia Valley until his passing in 2010 at the age of 50. Born and raised in Invermere, he graduated from David Thompson Secondary School and went on to become a mechanic before taking over the family's Ford dealership and service garage business with his siblings Marion and Harald and starting a family of his own.

"He gave so much to his community," said Erwin's wife Barb Kloos, "through his involvement in judo, as a ski racer, as a hockey coach. He always wanted to participate in everything when our children Nicole and Blair were in school."

Barb started as a director with the Columbia Valley Community Foundation in 2011 after Erwin passed away as a way to give back to the community that supported their family during his illness and loss.

"I became very inspired by philanthropy," she said.

The idea for a fund in Erwin's memory aligned with the Kloos family's own philanthropy and generosity. Erwin's parents, Stefan and Maria, had immigrated to Canada from Austria. Always grateful for the opportunities their new country provided, they regularly contributed to worthwhile projects in the community.

To remember Erwin, the Kloos family chose to create the Erwin Kloos Memorial Fund to support Columbia Valley students entering post-secondary education, with a particular focus on students pursuing trades and technical schooling.

With the fund having been established in the fall 2017, a student award will be granted for the first time in 2018.

"The fund will help empower youth with meaningful learning opportunities, so they can contribute back to their community in a positive way," said Barb. "I think Erwin would be honoured, that his legacy and life were remembered."

Donations to the Erwin Kloos Memorial Fund can be made on an ongoing basis.

Visit: <http://valleyfoundation.ca/donate-now/>



Erwin Kloos at the top of Mount Nelson



The Kloos Family

LEGACY FOR LITERACY *in the Columbia Valley*



Radium Hot Springs Public Library Endowment Fund

As the Columbia Valley community grows, the need for local library services is growing with it, and to accommodate this trend, the Radium Hot Springs Library is relocating to a bigger space inside the new Radium Hot Springs Centre when the building is completed this summer. This move will not only make the library more accessible to the public and increase the number of library patrons, but offer more opportunity for exciting new programming in the years to come.

It's for this reason the Radium Hot Springs Public Library has established an endowment fund with the Columbia Valley Community Foundation, to help sustain the library's expanding capacity in the long-term.

A long-term supporter of the Calgary Foundation, Columbia Lake resident Tom Symington is the Area F trustee for the Radium library who helped facilitate the creation of the Radium Hot Springs Library Endowment fund. Tom had a hand in helping establish a fund for the Invermere Public Library and based on that fund's success, he was anxious to promote a similar fund for the new village library in Radium.

"I was convinced that the Columbia Valley Community Foundation had a great deal of potential for charitable organizations in the valley that might wish to take advantage of its evolving community profile and the option it offers to provide sustainable long-term funding," he said.

As the fund grows, the annual interest payments will enable the library to offer enhanced services to its Valley-wide patrons.

"I hope that this fund will not only sustain the Radium library's programming by attracting donations from library patrons, supporters and benefactors, but that it will be another option for valley residents when they choose to make a donation in memory of a friend or loved one," said Tom. "This fund will also provide an incentive for someone who might wish to make a bequest with the knowledge that the funds will be used in the long-term interests of the library as the original investment is left to grow over time."

Donations to the endowment fund may be made by cheque to the Columbia Valley Community Foundation or by an on-line donation through Canada Helps:

<http://valleyfoundation.ca/donate-now/>

Giving Back to Community Board Member Highlight

Katherine Harmsworth

Katherine Harmsworth's professional expertise as a grant maker is proving to be an invaluable asset to the Columbia Valley Community Foundation. Katherine brings to her director role over 15 years of experience as a philanthropic advisor, a career that began with the Canada West Foundation in Calgary while doing her Master's in Political Science. Moving to Boston in 2001, she worked with the Ellis L. Phillips Foundation and focused on promoting philanthropy in Massachusetts for several years before relocating to Toronto where she stepped into the Director of Family Philanthropy position for the Toronto Community Foundation.

"Creating social change and social impact has always been important to me," said Katherine. "Philanthropy allows passionate donors to connect with non-profit leaders doing important work in their communities."

Katherine returned to Calgary in 2007, which allowed her to be closer to her family in the Columbia Valley, where she grew up and family members still reside. After helping launch the Trico Charitable Foundation, a foundation focused on social entrepreneurship, she set up her own Calgary-based consulting business. While on a visit to the valley, she spotted an ad in the Pioneer newspaper announcing the CVCF was seeking board members and offered to volunteer.

"I think the Columbia Valley is a special place from the connections among the people, to the natural wonders available for us to experience," she said. "These things are very important to me."

As the chair of the CVCF Grant Committee, Katherine heads up the review and discussion around selecting community grants in the fall and the Arnold Ellis scholarships in the spring, advising on best practices in grant making.

"And part of that journey has included a growing number of students applying and as well as a growing number of funds to grant out," she said. "The challenge in philanthropy when you're working with a donor or a family foundation or when you have the stewardship of money set aside for the valley is you want to make good grants and how to do that is more challenging than people actually realize."

Working with the CVCF Board of Directors solidifies her opinion of the valley as having some very special people who are contributing their time and talent to their community.

"I think it's really important to give back and while I'm not permanently residing in the valley, I can still make a contribution to the place where I grew up and where so many people were so generous to me."



	RESTRICTED	UNRESTRICTED	TOTAL 2017	TOTAL 2016
REVENUE				
Donations	89,635	244	89,879	40,638
Grants	12,350	19,883	32,233	20,854
Investment income	127,345	38,515	165,860	135,173
TOTAL REVENUE	229,330	58,642	287,972	196,665
CHARITABLE DISBURSEMENTS				
Community grants	83,513	0	83,513	64,235
Student awards	56,900	0	56,900	56,846
TOTAL CHARITABLE DISBURSEMENTS	140,413	0	140,413	121,081
	88,917	58,642	147,559	75,584
EXPENSES				
Advertising		2,764	2,764	11,427
Bank and Donation Charges		146	146	60
Insurance		2,079	2,079	1,545
Membership and Dues		859	859	734
Office and Meeting Costs		14,723	14,723	8,147
Professional Fees		6,288	6,288	4,948
Rent		5,447	5,447	5,447
Subcontracts		4,061	4,061	10,468
Travel and meals		283	283	1,804
Website and Internet		10,181	10,181	4,564
Wages and Benefits		27,969	27,969	27,619
TOTAL EXPENSES		74,800	74,800	76,763
	88,917	(16,158)	72,759	(1,179)
OTHER EXPENSES				
Contributions				198,141
REVENUE IN EXCESS OF EXPENSES	\$88,917	\$(16,158)	\$72,759	\$(199,320)

About our Funds

The Columbia Valley Community Foundation manages charitable gifts from donors whose generosity allows us to create permanent, income-earning funds that are distributed in the areas the donors wish to support.

Donations to the Foundation may be designated or undesignated by the donor:

- *Undesignated* donations under \$1,000 are allocated to operations
- *Designated* funds can be directed to endowed, flow-through or operating funds.

FUND TYPES WITHIN THE FOUNDATION'S ASSETS

ENDOWED FUNDS are endowed either permanently or for a specific period of time (generally 10-30 years). The contributed principal is invested and the returns from the investments are allocated to grants and operating fees. The donor can provide succession management instructions for the funds during, or after, their lifetime.

- *Community funds* give the Foundation the greatest flexibility to respond to current community needs. Donors can create named funds within the Community Fund.
- *Designated funds* are granted to specific, named charities.
- *Donor Advised* funds are normally established by individuals or families who wish to remain involved in granting decisions and disburse grants annually.
- *Field of Interest funds* are established by donors who wish to support their charitable interests: student awards, arts and culture, environment, recreation, literacy, health and safety, social services, community facilities, youth or education.

FLOW-THROUGH FUNDS are restricted funds. The principal of Flow-Through Funds may be granted at any time as specified by Foundation policy or the donor, generally within 12-36 months.

OPERATING FUNDS come from non-designated or designated donations, and returns on investments from operating endowment funds, which are available to the Foundation for its operations.

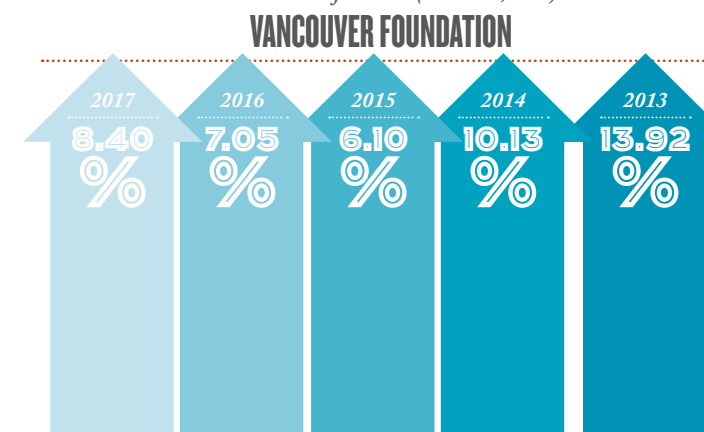
ENDOWED FUND BALANCES 2017

One of the best things about a Community Foundation is helping donors fulfill their wishes.

Value represents Original Contribution plus Undistributed Investment Income

TYPES/NAMES OF FUNDS	Dec 31, 2017
Community Fund	344,801
Kootenay Savings Community Fund	113,170
DESIGNATED FUNDS	
Columbia Valley Arts & Culture Fund	697
Hospice Society of the CV Fund	11,270
Invermere Public Library Endowment Fund	14,343
Schnider Family Legacy Fund	18,730
Radium Hot Springs Public Library Fund	1,120
DONOR ADVISED FUNDS	
Gordon Wilder Memorial Fund	54,175
Our Children's Legacy Fund	87,226
Sherry and Harvey Doerr Family Fund (BC)	104,284
Tom Sanders Memorial Fund	60,063
FIELD OF INTEREST FUNDS	
Ann Tilley Memorial Fund	7,601
Arnold Ellis Scholarship Fund	1,498,720
Bidder Bursary Fund	10,477
Erwin Kloos Memorial Fund	11,000
Fairmont Family Fund	31,499
Opportunities for Youth Fund	89,549
Wittke Family Fund	6,000
OPERATING ENDOWMENT FUND	
Operating Endowment Fund	600,000
TOTALS	\$3,008,352
FLOW THROUGH FUNDS	
Flow Through Fund	14,689
Greg Constable Toyota Corolla Fund	2,628

Investment Performance (to Dec 31, 2017)



When you place your gifts in our care, we know that you count on the Community Foundation to operate efficiently and invest wisely. Our endowment funds are held with the Vancouver Community Foundation and Columbia Basin Trust. The size of both investment portfolios ensures that our funds are buffered from the volatility of the stock markets. The investment performance for the Vancouver Foundation Consolidated Trust Fund was 8.40% (to December 31, 2017)

In 2017, the Vancouver Foundation reduced their administrative fee to 0.50% from 1.15%. (A total decrease of 0.65%) This administrative fee reduction means that the Columbia Valley Community Foundation will receive more investment income annually resulting in an increase in the amount that is granted back to our community.

We are confident that the funds you have entrusted to us will continue to grow over time, providing grants to help the causes you care about.

Yours respectfully,
Cameron Dow

A donation from Horsethief Creek Pub 'Give Back Sunday,' allowed the Community Foundation to purchase trees for Windermere Elementary School



TREASURER'S REPORT

DONATING

to Your Community Foundation

If you regularly donate money to a charity – and you wish to help that charity to continue its good work forever – it makes sense to establish an endowed fund through the Columbia Valley Community Foundation.

Your will can provide a charitable gift of a specific amount, or a portion of the residue of your estate, to your named fund at the Foundation. The designated or donor advised fund agreement, signed during your lifetime, clearly sets out your intentions for the allocation of the annual grant from your fund to one or more federally registered charities, or general charitable interests. This gives you the flexibility to change the allocations during your lifetime without having to change the terms of your will.

At the end of your lifetime, when your estate gift is received into your fund, the Foundation's Board of Directors will ensure your wishes are honoured. You can choose to have family members be a part of your legacy fund at any time.



THE WITKKE FAMILY

established the Wittke Family Fund to support literacy in our communities in 2017

DO SOMETHING AMAZING FOR YOUR COMMUNITY *create an endowed fund in your name, a loved one or for your charitable passion.*

2017 Donors

Thanks to all who have placed their trust in the Columbia Valley Community Foundation.

INDIVIDUALS

Anonymous
Alison Lang
Allan McDowell
Andrew Little
Anita Zehnder
Ann Louise Evanoff
Ashton Myers
Barbara Gagatsek
Barbara Kloos
Barbara Neraasen
Barend & Bjorn Leverkus
Bob Hendren
Brenda Holden
Cameron & Eloise Berry
Carolyn Rogers
Cathy McGrath
Christine Dubois
Colleen White
David Fryer
Davis Tenta
Denise Brownlie
Dianne Kienitz
Dianne Lyle
Duncan Whittick
Eleanor & Kenneth Devlin
Fred Schubel

Heather von Ilberg
James Bond
James Rose
Jane Iburgood Sagal
John McCarthy
K. Joy Bond
Karen Fabrni
Kayja Becker
Kelly Geiger
Kyle Hendry
Laurie Klassen
Leann Wittke
Logan Powell
Lynda Tutty
Maria Klavkoff
Marilyn Kraayvanger
Marion Rogers
Michelle Rievaj
Mike Leckie
Norm Funnell
Nancy Constable
Nicole Pawlak
Phyllis K. Reid
Rachel Head
Ray Destobel
Renate Gaspar

Rhonda M. Gernscheid
Rhonda Sage
Richard & Laura Hermakin
Robert Juffs
Robin Kinnersley
S & I Dewey
Samantha Helmer
Sara Borle
Scott Ivers
Stephanie Stevens
Susan Helmer
Susan Malone
Teresa Rogal
Theresa Schneider
Thomas S. Symington
Trevor Warebam
Vicki Garrett-Squire
W. Brett Wilson & Family
Wayne & Kim Collens
Wayne Rossington
William Constable
William Jankola

ORGANIZATIONS

Aviva Community Fund
Calgary Foundation (Hay Family)
Friends of the Invermere Public Library
Gift Funds Canada
Kootenay Savings Community Foundation
PLG Holdings



Recipients of the **W. BRETT WILSON & FAMILY COMMUNITY DONATION**

Community Legacy Building

in 2017

our GRANT recipients

QUALIFIED CHARITY OR DONEE / PROJECT PARTNER	PROJECT DESCRIPTION	GRANT \$
DISTRICT OF INVERMERE	Aviva Community Fund (CV Centre)	5,000
FRIENDS OF THE INVERMERE PUBLIC LIBRARY	Canada 150 Grant – Children's section of the new library	3,500
VILLAGE OF CANAL FLATS	Canada 150 Grant – Canada Day & Tilley Memorial Park Grand Opening	750
COLUMBIA VALLEY ARTS COUNCIL	Canada 150 Grant – Canada 150 Season of the Arts	4,750
BC ADAPTIVE SNOWSPORTS/Panorama Adaptive Sports Society	Canada 150 Grant – Program Development	850
STEAMBOAT MOUNTAIN MUSIC FESTIVAL	Canada 150 Grant – Steamboat Mountain Music Festival 2017	2,500
COLUMBIA VALLEY CHRISTMAS BUREAU	Flow-through donation	2,000
COLUMBIA BASIN ALLIANCE FOR LITERACY	Flow-through donation	2,000
COLUMBIA VALLEY FOOD BANK	Flow-through donation	3,000
FAMILY DYNAMIX ASSOCIATION	Flow-through donation	5,000
HOSPICE SOCIETY OF THE COLUMBIA VALLEY	Flow-through donation	2,000
INVERMERE COMPANION ANIMAL NETWORK	Flow-through donation	500
DISTRICT OF INVERMERE/Invermere Public Library	Flow-through donation	5,000
WINDERMERE VALLEY YOUTH CENTRE SOCIETY	Flow-through donation	1,000
SCHOOL DISTRICT 6/Windermere Elementary School	Flow-through donation	2,000
WILDSIGHT	Flow-through donation	1,000
FAMILY DYNAMIX ASSOCIATION/Royal Canadian Legion	Flow-through donation	1,000
COLUMBIA VALLEY ARTS COUNCIL	Flow-through donation	2,500
DISTRICT OF INVERMERE/Columbia Valley Youth Soccer	Flow-through donation	500
COLUMBIA WETLANDS STEWARDSHIP PARTNERS	Hydrologic assessment of Upper Columbia Wetlands	2,000
RADIUM HOT SPRINGS PUBLIC LIBRARY	Furnishings for new library	2,500
EDGEWATER RECREATION SOCIETY	Sound system for Frank's Rink	2,000
CROSS COUNTRY CANADA/Toby Creek Nordic Club	Youth skill development program	1,500
COLUMBIA BASIN ENVIRONMENTAL EDUCATION NETWORK	Wild Voices for Kids in the Columbia Valley	1,000
VILLAGE OF RADIUM HOT SPRINGS/Columbia Valley Swim Club	Swim equipment	1,500
HOSPICE SOCIETY OF THE COLUMBIA VALLEY	Lending library Phase 4	3,500
COLUMBIA VALLEY ARTS COUNCIL	Pynelogs AV equipment move	1,200
LAKE WINDERMERE AMBASSADORS SOCIETY	Revitalizing summer and winter stewardship guides for Lake Windermere	5,000
WINDERMERE VALLEY YOUTH CENTRE SOCIETY	Items for Summit Youth Centre	3,733
COLUMBIA VALLEY GREENWAYS TRAIL ALLIANCE	Access the Valley accessibility project	6,830
COLUMBIA BASIN ALLIANCE FOR LITERACY	Guys Read program	2,400
STEAMBOAT MOUNTAIN MUSIC SOCIETY	7 th Annual Steamboat Mountain Music Festival	2,000
DISTRICT OF INVERMERE/CV Youth Soccer Association	Youth soccer equipment	1,500
REGIONAL DISTRICT OF EAST KOOTENAY/Fairmont Lions Club	Maintenance of public use park	2,000
TOTAL COMMUNITY GRANTS AWARDED IN 2017		\$83,513

STUDENT AWARDS

2017

The Grants Committee initiated the 2017 spring granting for student awards from the Arnold Ellis Scholarship Fund and the Bidder Bursary Fund.

The Tom Sanders Memorial Fund recipients were recommended by the Kinsmen Club of the Windermere Valley, who carries out their application process in an advisory role to the donor advised fund.



Our young people of the Columbia Valley are pursuing ambitious, world-wide studies.

WE ARE VERY PROUD.



Arnold Ellis Scholarship Fund

\$1,200/Award (2017 Recipients)

<i>Anderson, Caoimbe</i>	<i>Kopp, Michael</i>	<i>Pietrosky, Hunter</i>
<i>Arif, Anna</i>	<i>Kopp, Nathan</i>	<i>Raven, Kaitlyn</i>
<i>Carriere, James</i>	<i>Kurtz, Larissa</i>	<i>Rice, Braydi</i>
<i>Clarke, Shelbie</i>	<i>Kwok, Sidney</i>	<i>Rice, Robert-Tye</i>
<i>Constable, Christine</i>	<i>Larrabee, Melissa</i>	<i>Ross, Clare</i>
<i>Danyluk, Emily</i>	<i>Mauthner, Micaela</i>	<i>Shoemaker, Leah</i>
<i>Dubois, Katrina</i>	<i>Mauthner, Samantha</i>	<i>Smith, Kyla</i>
<i>Frank, Kelsey</i>	<i>Maybuck, Carli</i>	<i>Striegel, Chase</i>
<i>Hendry, Brook</i>	<i>Maybuck, Tori</i>	<i>Striegel, Kai</i>
<i>Hoobanoff, Nicholas</i>	<i>Moore, Kieran</i>	<i>Steedman, Kylie</i>
<i>Hromadnik, Jessica</i>	<i>Nester, Hillary*</i>	<i>Swallow, Matthew</i>
<i>Jensen, Denise</i>	<i>Newman, Haley</i>	<i>Tallis, Tannia</i>
<i>Kendler, Nicolas</i>	<i>Nikirk, Drew</i>	<i>Thompson, Madison</i>
<i>Kloos, Sarah</i>	<i>Pankovitch, Laura</i>	<i>Wiegert, Ben</i>

\$1,000/Award (2016 Recipients – received award in 2017)

<i>Halwa, Emily**</i>	<i>Messerli, Conrad</i>
<i>Jensen, Dominique</i>	<i>Taylor, Alexandra</i>

Tom Sanders Memorial

\$2,000/Award

Kanan, Rachel

\$1,000/Award

Kurtz, Larissa

Bidder Bursary Award

\$380/Award

Hoobanoff, Nicholas

Total Student Awards in 2017 **\$56,846**

* Hillary Nester received \$820.00 in 2017.

**Emily Halwa received \$500.00 in 2017.

Giving Back to Community Board Member Highlight

Brandon Csokonay

Brandon Csokonay brings a unique perspective to the Columbia Valley Community Foundation, not only as one of the youngest directors on the board but as someone who was born and raised in the Columbia Valley and plans to stay.



Brandon graduated from David Thompson Secondary School in 2003 and completed a degree in Business and Entrepreneurship from Mount Royal University in 2007. Returning to the valley, he stepped into the role of CEO to manage his family's business, Spur Valley Golf Resort & Campground.

Having seen his community change a great deal over the years, Brandon wanted to volunteer his time with an organization that creates a positive, lasting impact.

"I get the feeling the rate of change is ramping up," he said. "The potential the Columbia Valley has for being a world class place to live, work, visit and recreate is just beginning and the CVCF philanthropic cycle nurtures this development."

He's honoured to work with the team of diverse and dedicated CVCF volunteers, and appreciates the Foundation's structure, which ensures that the funds have a meaningful and intended effect.

"Both of these assets to our organization make me feel like everyone who is involved is making excellent use of their time and resources," he said.

Being part of the younger generation, Brandon was very enthusiastic about the CVCF's new direction in becoming more recognizable and accessible using social media, web presence and branding.

"Growing up here I have also learned what my peers' concerns are with living in the area and what has made them either stay, leave or return to the Columbia Valley. At the moment I am seeing friends move back to the valley in order to raise young families and I find that encouraging."

Brandon feels his overall vision of a thriving and supportive community is supported by CVCF, in particular by the Arnold Ellis scholarships.

"High school grads can get some support to further their post-secondary growth and hopefully they take with them the idea that the Columbia Valley is a place that cares about its people and makes a great place to settle down, retire or visit," he said. "We need people to be engaged in trading their ideas with others and eventually apply locally what they have learned abroad to make our area the best version of itself."

THANK YOU

Barb Kloos *Chair*
 Roberta Hall *Vice-Chair*
 Cameron Dow *Treasurer*
 Dean Midyette *Secretary*

Kayja Becker
 Brandon Csokonay
 Scott Ferguson

Katherine Harmsworth
 Paul Kendall
 Barbara Morris

WANT TO GET INVOLVED? We welcome donors, supporters and volunteers to join our board, committees or initiatives. Call today! Visit us at www.ValleyFoundation.ca or connect with us on Facebook, Twitter or LinkedIn.



Mailing address: P.O. Box 991, Invermere, BC V0A 1K0
Office location: 651 Hwy 93/95, Invermere, BC V0A 1K0
 250-342-2845 | info@valleyfoundation.ca
 Charitable BN 88261 8713 RR001 | www.ValleyFoundation.ca

We sincerely appreciate the contributions and partnerships of the following organizations:



We are a proud member of our national organization, Community Foundations of Canada:



Design & Layout: Nathan Siemens
 Slumberfight.com



Copywriter: Nicole Trigg

